

Ecolab's adaptive dish machine program seamlessly responds to unique needs and gets smarter over time – all in service of getting out of the way and reducing the labour and cost of dish operations.



Ecolab®
DishIQ™

serving your kitchen so well,
you'll forget it's even there.

EH500s dishmachine

Performance

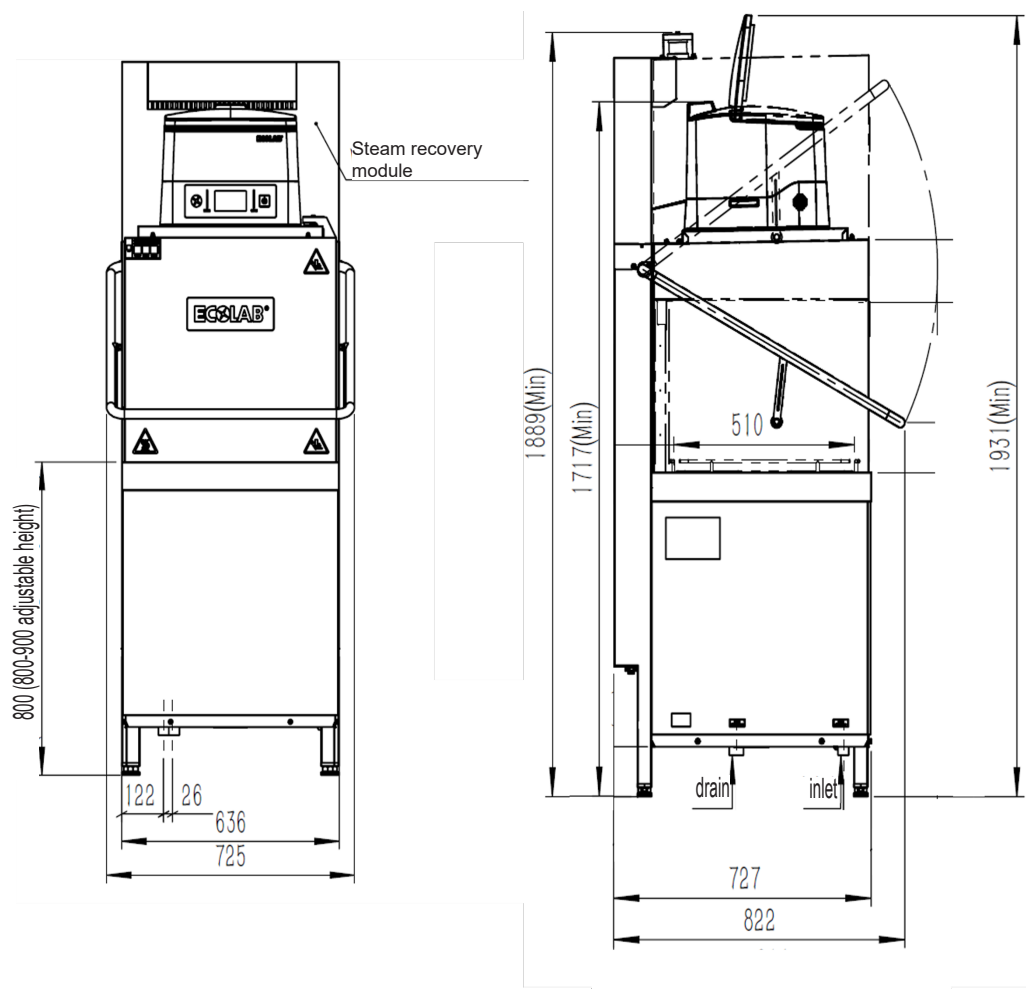
- Simply easy, from fast installations, to the 57 sensors informing us before failure avoiding downtime and keep operations running smoothly the program just works.

Efficiency

- Automated procedures and live monitoring reduce reliance on the operator for improved procedure compliance, with limited downtime and reduced energy and water consumption.
- State-of-the-art low energy/ low water dish machine with digitally enhanced monitoring, service and maintenance yielding the best results for the lowest total cost. We watch your machine around the clock so you don't have to.



Superior Results, 24/7 Service and a Great Financial Option.



For use with Ecolab chemistry.

Worldwide Headquarter
Ecolab Inc.
1 Ecolab Place
St. Paul, MN 55102

European Headquarter
Ecolab Europe GmbH
Hofwiesenstrasse 349 8050
Zurich, Switzerland

www.ecolab.com

©2025 Ecolab USA Inc. All rights reserved. 50615/0406/1121



SPECIFICATIONS

OPERATING CAPACITY	
Racks per Hour	60 / 40*
Ideal Daily Rack Count	100-250
OPERATING CYCLE NORMAL	
Wash Time	45 s
Dwell Time	8 s
Rinse Time	7 s
Total Cycle Time	60 s
OPERATING TEMPERATURES	
Wash (minimum)	65°C
Rinse (minimum)	85°C
WATER CONSUMPTION	
Litres per Rack	1,8
Litres per Hour	99
WASH CHAMBER	
Height	420mm
WEIGHT	
Machine Weight	158 kg
UTILITY REQUIREMENTS, ELECTRICAL	
Voltage/Frequency/Phase: 380V/50Hz/3 Ph+N	
Total Amperage	22,8 A
Minimum Electrical Circuit	30 A
Power Consumption:	
Wash Pump	0,7 kW
Rinse Pump	0,2 kW
Wash Heater	3 kW
Rinse Heater	5 kW
Total	8.9 kW**
Dimensions:	
Wash Tank	24 L
Rinse Tank	10 L
Rack Size	500 x 500mm
Performance:	
Energy/Rack	0,19 kWh/rack
Noise Level	67 dB
Drain Time	65 Man / 55 Auto
Start to ready	18 min
WATER	
Hardness (recommended)	0-16°dH
Waterline Size (minimum)	1/2" NPT
Flow Pressure Required	1-6 bar
Flow Pressure Ideal	1,5-4,5 bar
Incoming Temperature	10°C-60°C
DRAIN	
Drainline Size (minimum)	1-1/2" (33mm)
STEAM RECOVERY SYSTEM	
Flow-Cubic meter per Minute	5

*with vapour recovery

